



# **IPIFF ANNUAL CONFERENCE**

---

## **THE PERSPECTIVES OF EUROPEAN POULTRY MEAT SECTOR**

**Paul-Henri Lava – Deputy Secretary General AVEC**

# AVEC - ELPHA - EPB

## Secretariat



**President**  
Gert-Jan Oplaat



**Birthe Steenberg,  
Secretary General**  
[bs@avec-poultry.eu](mailto:bs@avec-poultry.eu)



**Paul-Henri Lava,  
Deputy Secretary General**  
[pl@avec-poultry.eu](mailto:pl@avec-poultry.eu)



**President**  
Wout van Wolfswinkel



**Nadia Khaldoune  
Senior Policy Advisor**  
[nk@avec-poultry.eu](mailto:nk@avec-poultry.eu)



**Federica Chiarella,  
Project Manager**  
[fc@avec-poultry.eu](mailto:fc@avec-poultry.eu)



**President**  
Magnus Swalander



**Isabella Beck Jørgensen  
Communications Manager**  
[lbeckjorgensen@kellencompany.com](mailto:lbeckjorgensen@kellencompany.com)

# Cover the whole chain from Breed to Meat

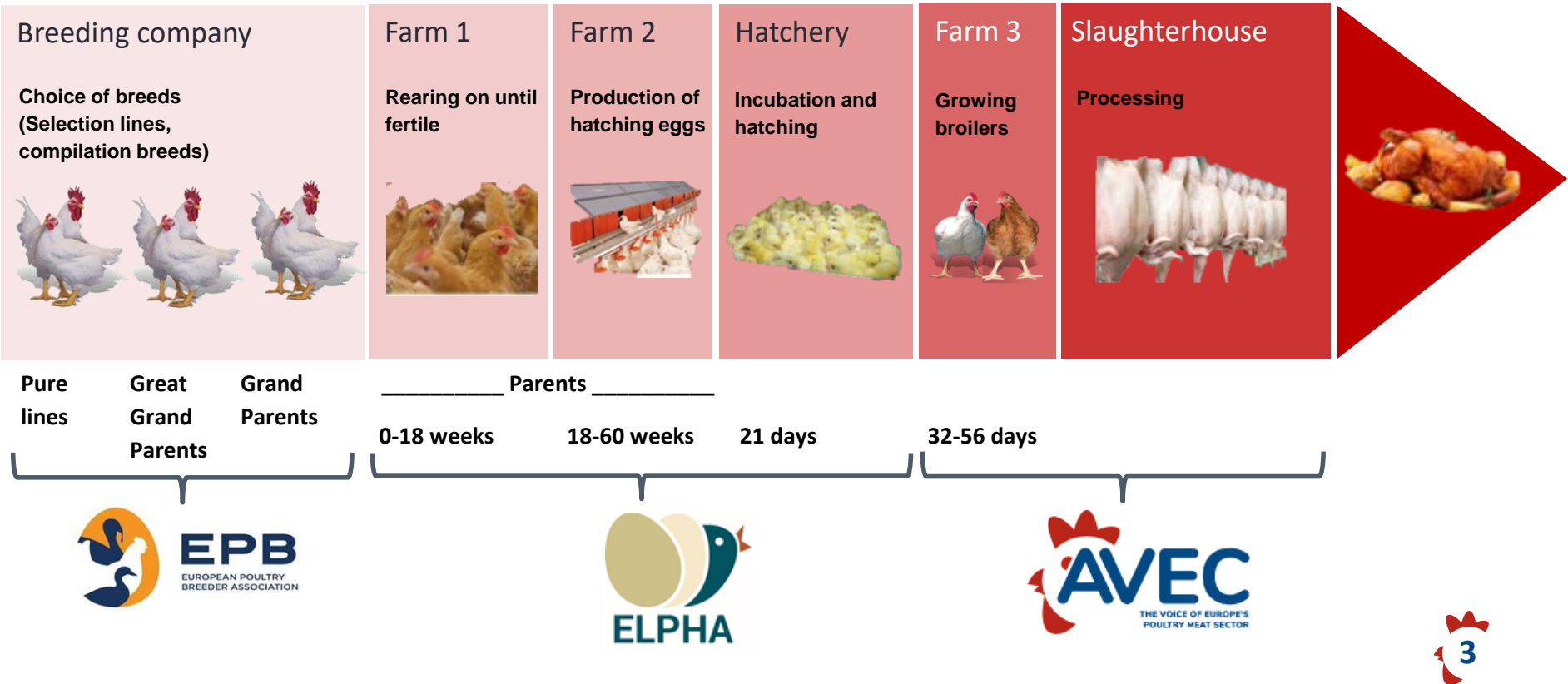
1

2

3

4

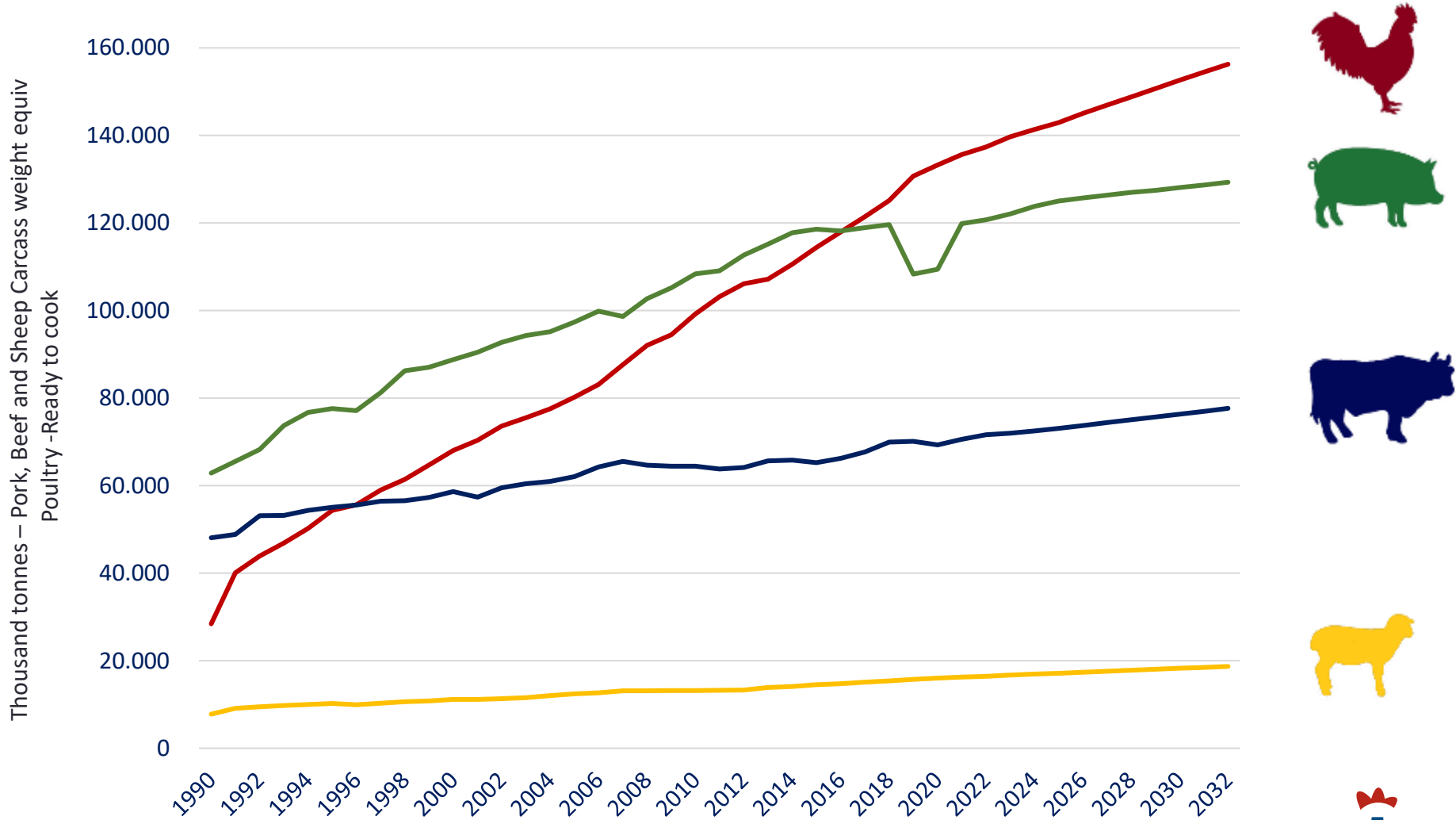
years



# **FEW FACTS ON THE SUSTAINABILITY OF THE (POULTRY) MEAT SECTOR**

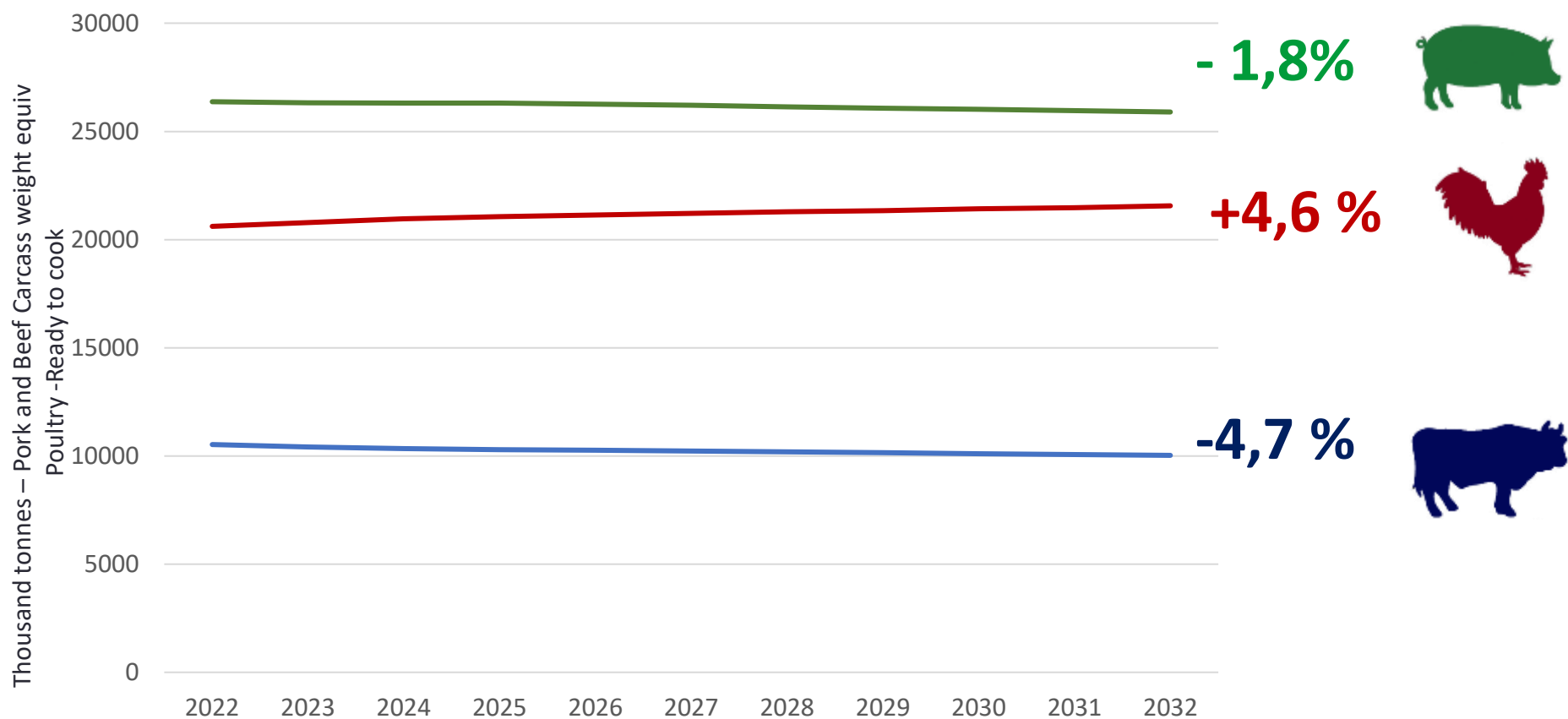
---

# World Meat Consumption Forecast till 2032



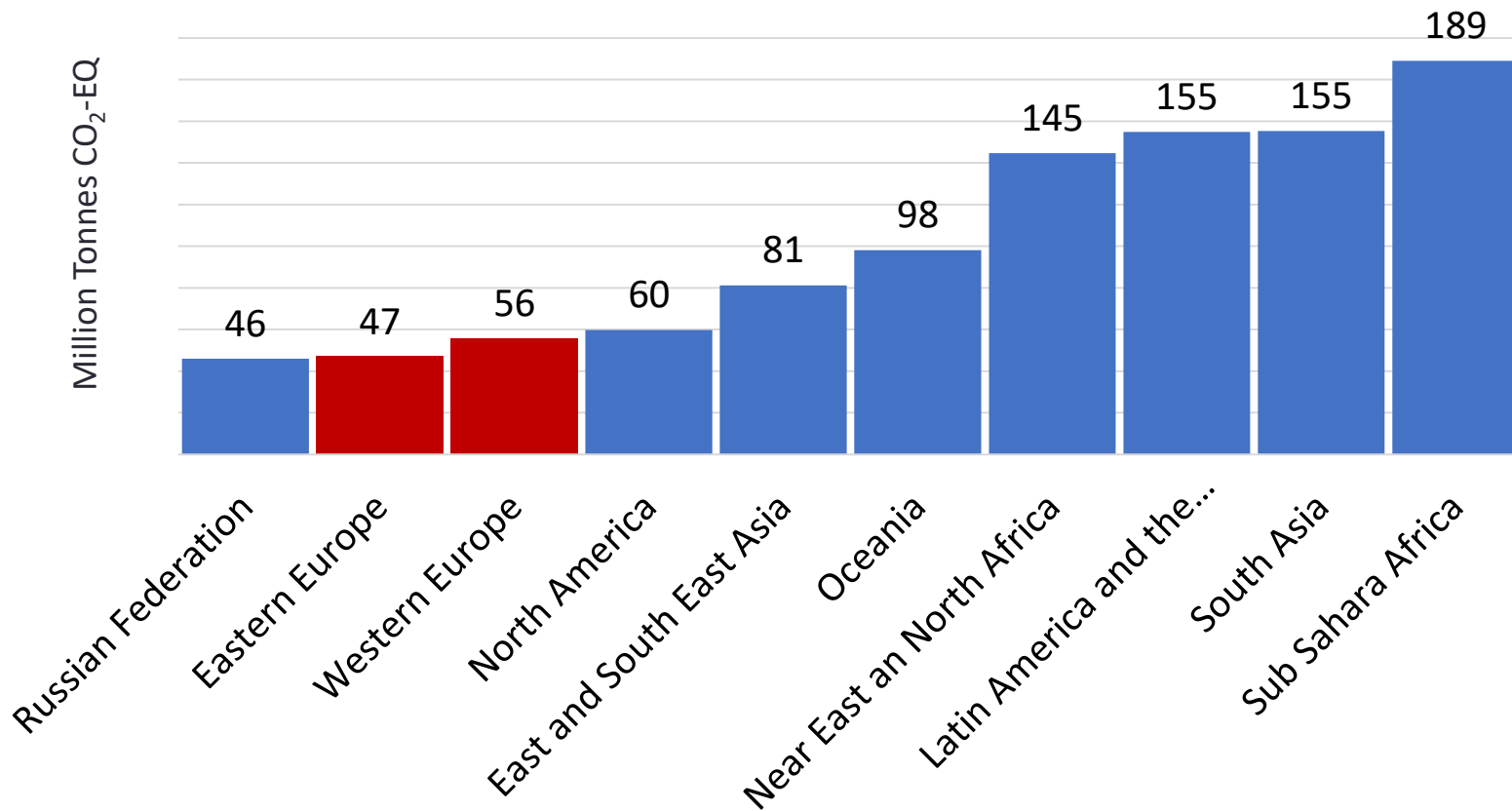
Source: OECD-FAO Agricultural Outlook 2023-2032 - © OECD 2023

# Europe Meat Consumption Forecast 2022-2032



# We produce meat in an efficient and climate smart way in Europe

Emission per million tons of produced animal protein



# Our response to Green Deal and Farm to fork strategy:



Launched in November 2022



# OUR 4 AMBITIONS



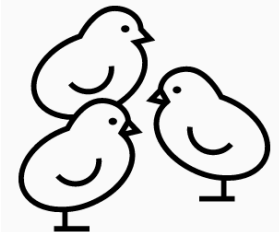
Improve the  
usage of  
natural  
resources

Reduction of  
the use of  
antibiotics



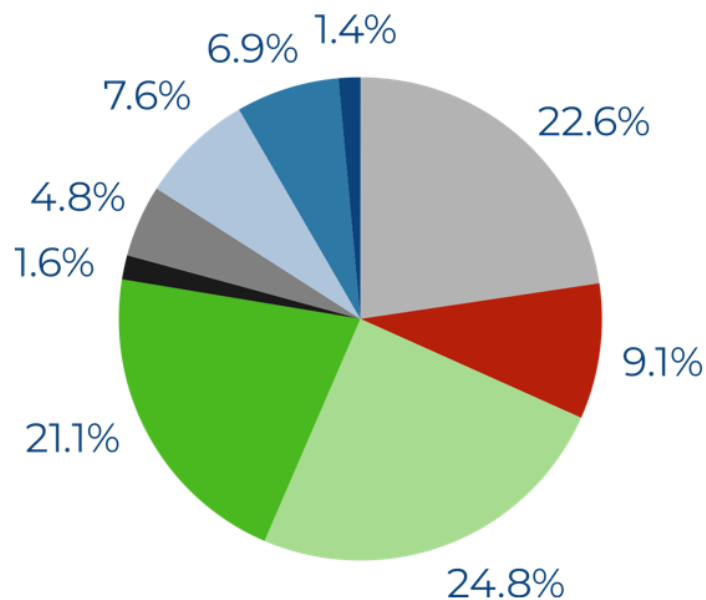
Reduce the  
use of  
packaging  
material &  
Food Waste

Optimize  
Animal  
Welfare



# Global emissions from poultry meat production

## GLOBAL EMISSIONS FROM CHICKEN MEAT PRODUCTION



- Applied & deposited manure, N<sub>2</sub>O
  - Fertilizer & crop residues, N<sub>2</sub>O
  - Feed, CO<sub>2</sub>
  - LUC: soybean, CO<sub>2</sub>
  - Manure management, CH<sub>4</sub>
  - Manure management, N<sub>2</sub>O
  - Direct energy, CO<sub>2</sub>
  - Postfarm, CO<sub>2</sub>
  - Other\*
- \*Includes «Feed: rice, CH<sub>4</sub>» and «Indirect energy, CO<sub>2</sub>»

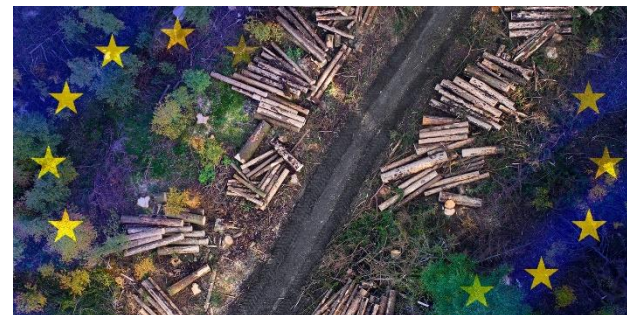


Significant impact of feed:  
almost 50% of poultry meat emissions

Source: <http://www.fao.org/3/i3437e/i3437e.pdf>

# Opportunities for the insect sector

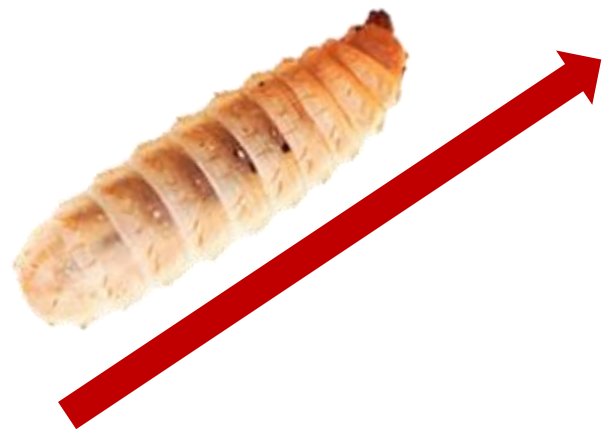
- Today, protein part of the poultry ration =
  - ▶ mostly soybean meal
- However, new EU legislation on deforestation:
  - Will soy producers invest in segregated production to match EU demand?
  - How much soy price will increase?
- Responsible soy will be part of the solution **but there is a great opportunities for insect producers to respond to a need for alternative feed protein**



# Opportunities for the insect sector

► Potentially alternatives to soy will get opportunities BUT:

- It needs to be competitive
- It needs to be safe
- It needs to bring the required nutritive elements
- It needs to have a low impact on the environment
- It has to be accepted by the society



➡ **Let's collaborate to find successful solutions for our businesses !**

**European Poultry  
Meat is part of the  
solution**

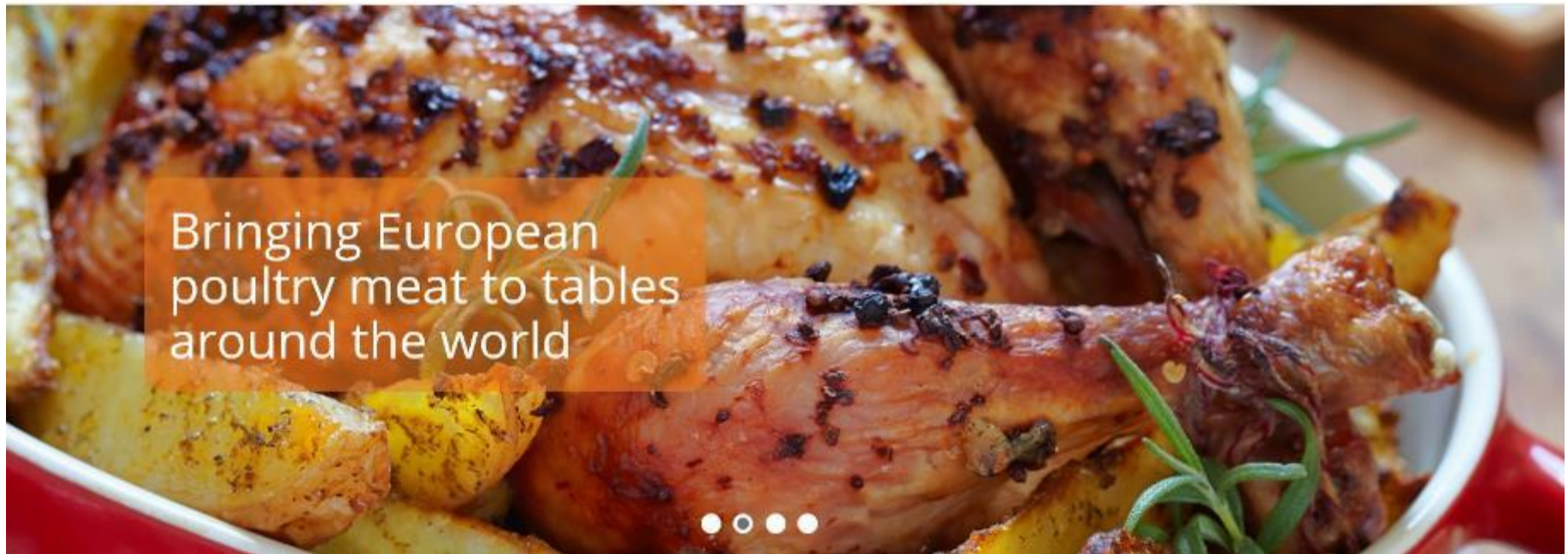
# And we are proud of it !



Follow us on Twitter: [@AvecPoultry](https://twitter.com/AvecPoultry)



Have a look at our website: [www.avec-poultry.eu](http://www.avec-poultry.eu)



Bringing European  
poultry meat to tables  
around the world

